



Pippin Pre-School

Travel Plan



March 2020

Contents

1) INTRODUCTION

- Aim
- Description of location

2) OVERVIEW

- Pre-school information
- Our day

3) ROUTE TO SCHOOL

- Pedestrian Route
- Bus route

4) STAFF TRAVEL

- Modes of transport
- Travel issues

5) RESULTS

- Modes of transport
- Travel distance from Pippin
- Walking encouragement

6) OBJECTIVES

- Detailed objectives
- Implementation
- Monitoring and review

7) APPENDIX

- Living sheets factsheet

Introduction

1.1 Aim

The aim of the travel plan is to inform the pre-school of the local infrastructure/environment, to encourage a safe and sustainable journey to pre-school for both children and staff, highlighting potential risks and to make recommendations for mitigating these risks. It is endorsed by Pippin Pre-School and Central Bedfordshire Council as the action plan to achieve this aim.

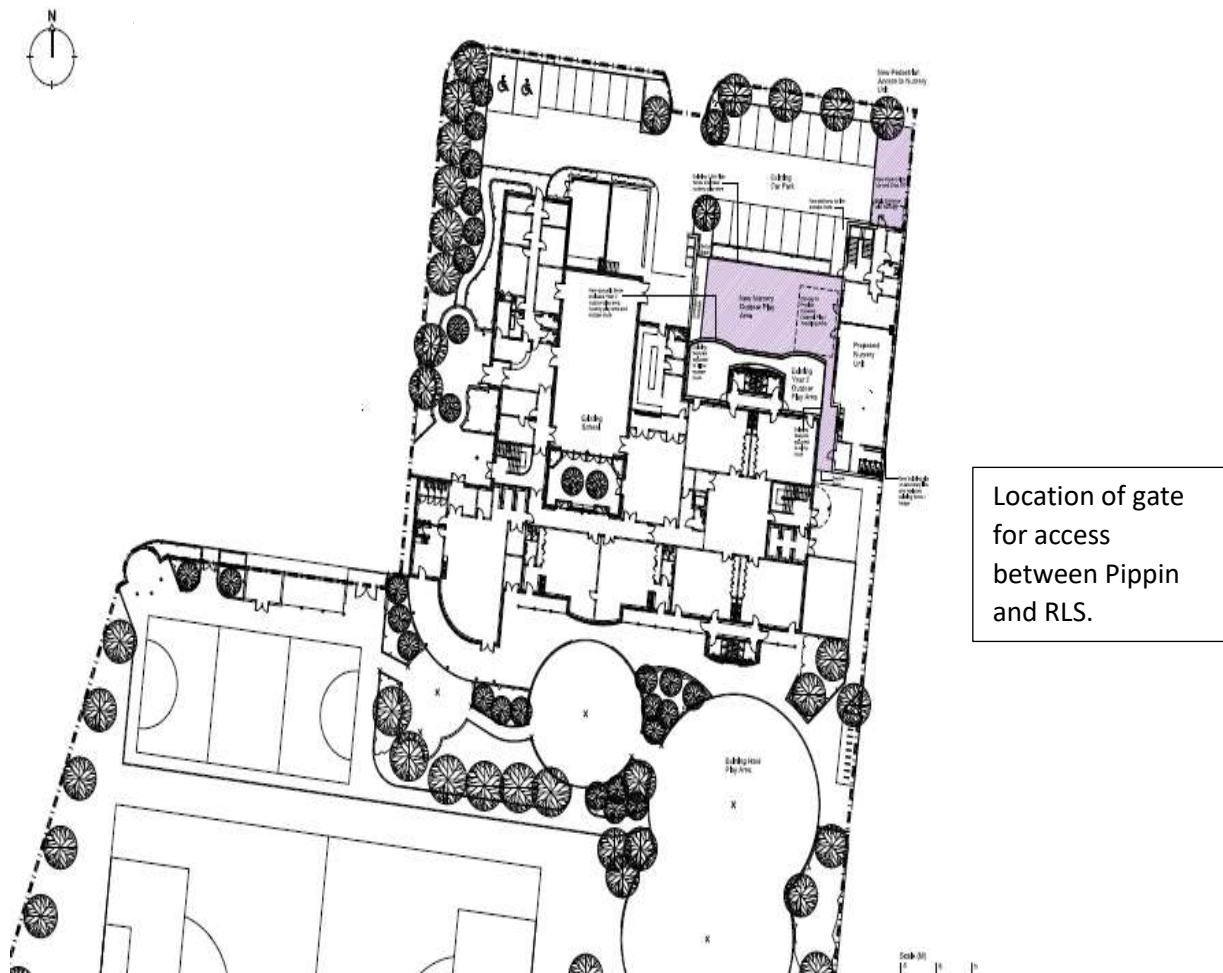
The travel plan has been informed by a survey of travel patterns of Pippin's existing children and identifies the key concerns of parents. The survey comprised of a questionnaire completed by parents in October 2019.

Adoption of the travel plan demonstrates:

- An acknowledgment of the need to reduce car traffic to and from the pre-school.
- A commitment to encourage alternative modes of travel to the pre-school.
- A commitment to child safety on the journey to and from pre-school.
- An acknowledgement of the need to raise parent's awareness to the existing transport problems faced at the pre-school and in the immediate area.
- A commitment from the local authorities responsible to promote more sustainable travel patterns by taking the travel plan into account when assessing the impact of new development.

1.2 Description of the location, size and type of the pre-school

At present Pippin Pre-School is a charity-run pre-school for children ages 2-5. It provides wrap-around care for children attending Roecroft Lower School (ages 5-9) in the form of Breakfast and After-School clubs.



The pre-school building is located to the north of the school site and is a separate building with no direct access to the main school building. The entrance is located on Buttercup Road, although this is not a through road the community centre has access to its car park adjacent to the pre-school.

A gate at the back of the Pippin allows Roecroft children attending breakfast and after-school clubs to transfer between the two buildings safely without having to leave the school site.

Overview

2.1 Pre-School information

Pippin is one of five pre-school providers in Stotfold. The other providers are: Poppies (located by St Mary's Academy); Poppyfields (located by Fairfield Park Lower School); Busy Bees Nursery (High-Street) and Monkey Puzzle (located in Astwick).

Pippin has an annual intake every September for nursery places. There are currently 87 children on the books, with the maximum number for each session being 60. In addition, Pippin runs Breakfast and Afterschool clubs for both Pippin children and children attending Roecroft Lower School. There are currently 155 children who use the Breakfast and Afterschool facilities, 128 from Roecroft and 27 from Pippin, this is a significant increase of 65 children (58%) compared to previous year figures.

There is no formal catchment area for Pippin, however with the increase in numbers since moving into the current accommodation, Pippin has adopted the current Roecroft catchment area as a basis for accepting applications.

The pre-school has 33 members of staff at present, with 28 members of staff living in the community of Stotfold, with the remainder travelling from local villages including Arlesey, Shefford, Hitchin and Gravenhurst.

2.2 Our Day

Breakfast club is open from 7.30am, parents bring their children to the Pippin entrance located on Buttercup Road. Breakfast club finishes at 8.45am, when Roecroft pupils are escorted to school by 4 members of Pippin staff via the gate linking the Pippin area to the main playground of Roecroft and into the Roecroft building. The morning session of the pre-school starts at 9am, again the children are brought to the Pippin entrance by their parents. The doors are opened at 9am, however parents usually arrive from 8.45am onwards and gather within the ramped area in front of the Pippin doors. The morning session finishes at 12pm. The afternoon session starts at 12.45pm and finishes at 3.15pm.

After-school club starts at 3.30pm. Roecroft pupils are brought to a specified location within the school by a member of Roecroft staff, they are then escorted by 4 members of Pippin staff to our building. After-school club sessions are 3.30pm to 5pm and 3.30pm to 6pm, when parents pick up their children from the Pippin entrance.

Office Hours

The pre-school office is open from 8.30am to 4.00pm Monday to Friday, term time only.

Facilities

Currently there is 1 parking space located within the Roecroft car park allocated to Pippin. We have a scooter rack under our canopy, however there is no provision for bicycle storage (due to limited space).



Extra-Ordinary Travel Arrangements

Arrangements would be made with the Roecroft Headteacher should the requirement become necessary.

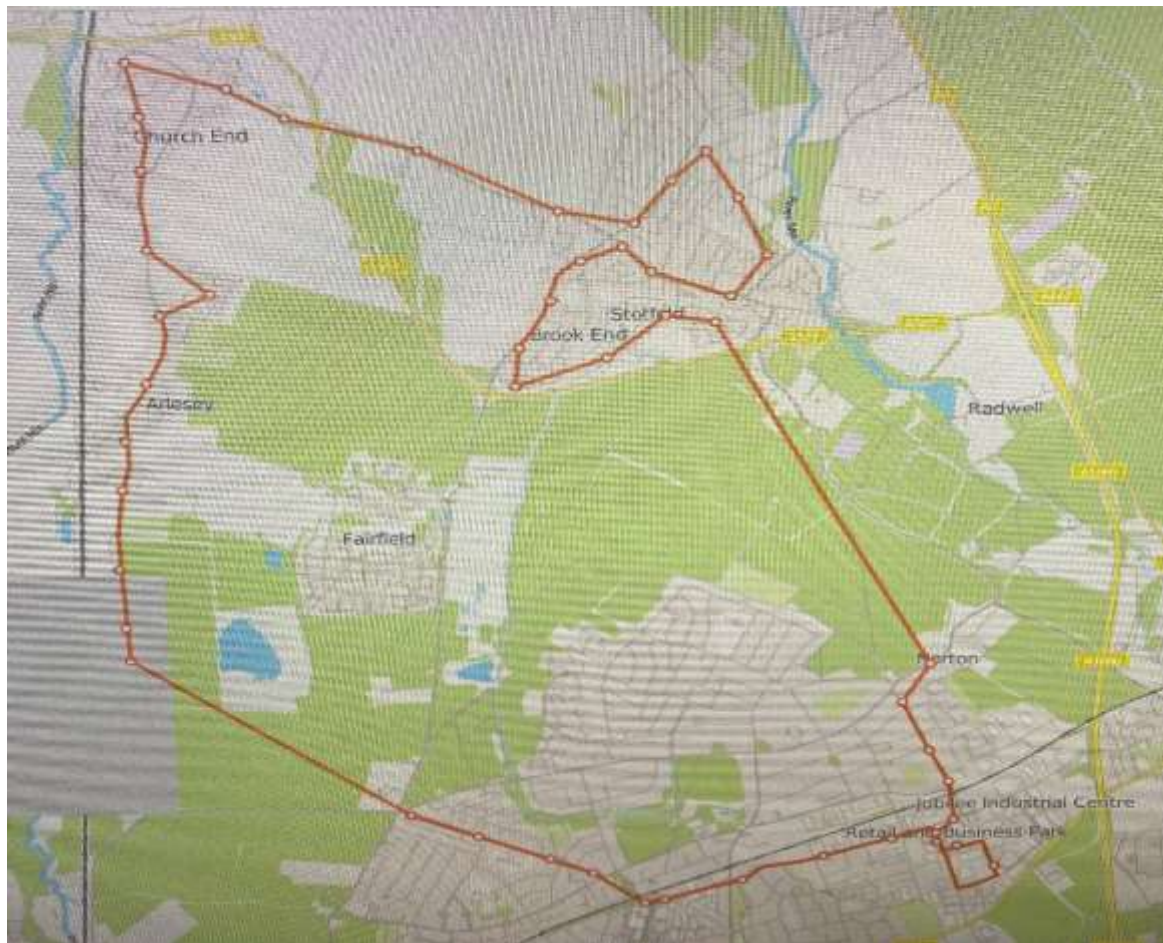
Routes to School

3.1 Pedestrian and Cycle Routes

There is currently access between the existing town and new development via Grange Drive/Mulberry Close. Additional cycle and pedestrian links to Stotfold are to the west at Brook Street, Howard Close and Hitchin Road.

3.2 Bus Routes

A bus route (96) travels through the development (please see map below). Currently there are formal stops outside the Community Centre, Valerian Way and Tansy Avenue. The Community Centre stop is located close enough to the pre-school and on pedestrian routes which provide safe pedestrian access to the pre-school.



Staff Travel

4.1 Modes of Transport

As mentioned previously in this plan, the majority of staff at Pippin live in Stotfold. The majority of staff drive to work for various reasons including:

- Collecting their own children from schools outside of Stotfold i.e. Henlow Middle, Robert Bloomfield and Samuel Whitbread.
- Start and finish times – staff are onsite from 7am until 6pm and during winter it is dark at these times, so safety is a key consideration.
- Walking times – several members of staff live the opposite side of town from Pippin and walking would add 20-30 minutes to their journey.

We are pleased to confirm some members of staff now car share to help alleviate the problem with parking.

4.2 Travel Issues

The table below describes travel issues that prior to sending out questionnaires the pre-school is aware of.

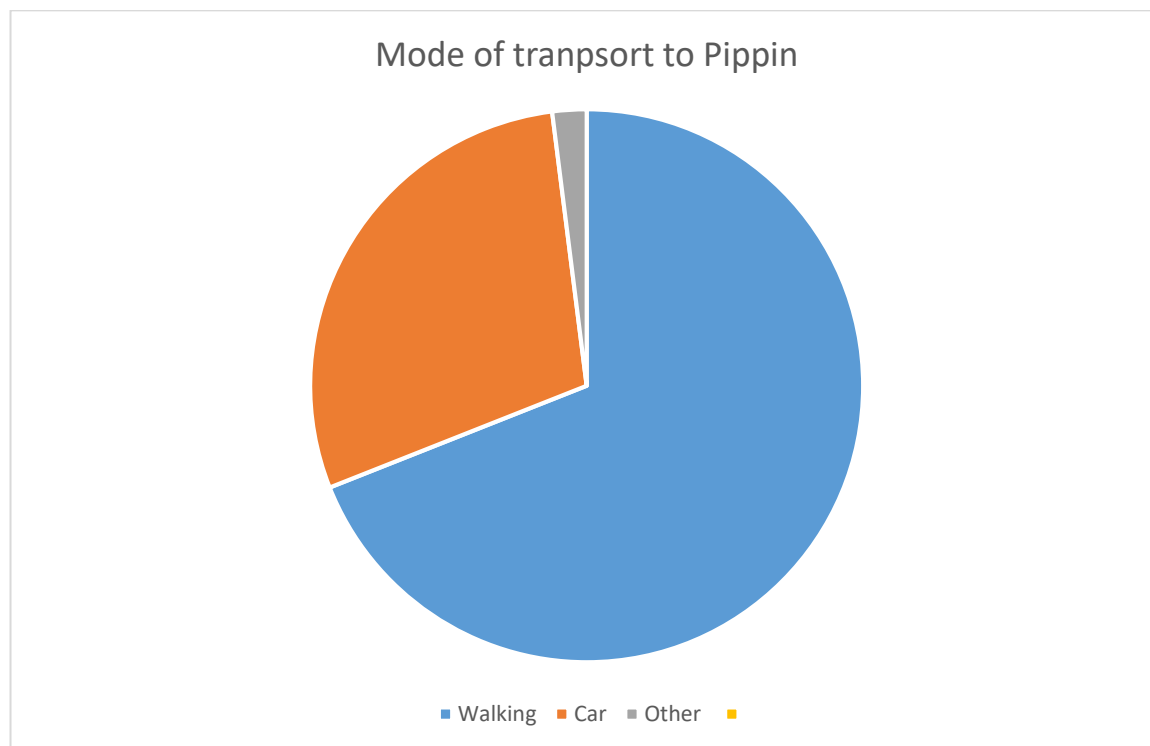
Issue	Source
Parking causing congestion in the roads immediately surrounding the school.	Discussion with other parents. Complaints from local residents.
Nowhere for parents to shelter on wet days.	Discussion with other parents.
Lack of spaces in school car park.	Comments from staff.

5 RESULTS

An in-depth survey regarding travelling to school for parents and pupils was sent out electronically to parents via survey monkey in October 2019. We received 179 responses from parents/carers.

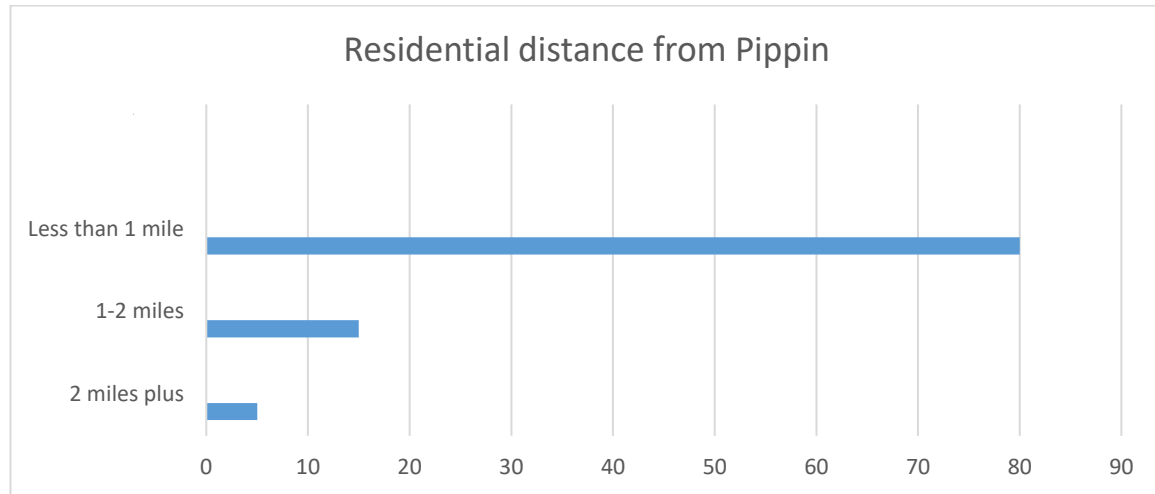
Modes of transport

The results from this year's survey were a contrast to previous years. In 2015, the most popular way of traveling to Pippin Pre-School was to walk (85%), with travelling by car (15%). In 2019 the results for walking reduced to 69.3% of respondents, with an increase of 29% for travelling by car. The other options (bicycle, bus and car share) remain similar. The main reason for this fluctuation is our survey was completed by both preschool and wraparound parents, in previous surveys only preschool parents were asked. Many wraparound parents drive to Pippin as they are enroute to and from work.



Travel distance from Pippin

The vast majority of respondents (80%) live within 1 mile of the pre-school, with only 20% living further than this, 15% 1-2 miles and 5% living further than 2 miles.



Nearly all respondents viewed their current route to the pre-school to be safe or fairly safe, with 1 respondent feeling their journey was unsafe. However, several respondents identified areas that they considered to be dangerous including; traffic, poor parking and driving. The resident lollipop lady (since 2015) at the beginning and end of the day was deemed to be beneficial if not essential for the road safety of the children.

Walking encouragement

The main elements that would encourage parents to walk to the pre-school are additional crossings (26%), an area to wait when it is raining (16%), parking restrictions (17%) and slower parking speeds (16%). Unfortunately, most of these elements are outside of Pippin's control. We did increase our canopy at the front entrance (2017) to allow parents to shelter from the weather and cannot increase any more due to building regulations.

Parking restrictions in the form of double yellow lines have been installed along a section of Buttercup Road immediately outside Roecroft, however parents frequently park on these despite the markings! We have made our own enquiries to Central Bedfordshire Council regarding yellow lines immediately outside our entrance to prevent local residents blocking the road and making it difficult/dangerous to cross. We have been advised they are waiting to adopt the roads before they can instruct.

Objectives and Targets

Objective 1: To facilitate sustainable journeys to be made to the pre-school.

Target: To provide information about walking, cycling and bus routes to parents and carers and staff.

Actions:

1. Develop a sustainable travel policy, highlighting problems with driving to Pippin, benefits of walking/cycling.
2. Travel policy will be included on Pippin Pre-School website.
3. The key elements of the travel policy will be communicated to parents, carers and staff through the weekly newsletter, monthly staff meetings and Committee meetings.

Objective 2: To encourage travelling by sustainable modes to pre-school.

Target: Reinforce the preference for sustainable travel methods to children, parents and staff.

Actions:

1. Use themed weeks to promote and educate about sustainable travel to children within the setting. Encourage all children to join in our Barnardo's Toddle in June.
2. Promote sustainable travel methods to new parents at Open Mornings (held in October, February and July).

Objective 3: To monitor and update the Pippin Pre-School Travel Plan

Target: Review and update the travel plan annually.

Actions:

1. Pippin Pre-School Committee to have place-holder on agenda to review travel plan, traffic and parking problems at monthly meetings.
2. In-depth electronic travel survey to be carried out annually during Autumn term to capture data from new parents.
3. Travel plan to be updated with new data and actions revised (Spring term).
4. Hold annual meeting with Roecroft Lower School to update policy.

Implementation

Pippin Pre-School acknowledges its role in encouraging parents, carers and staff to use sustainable methods of transport for their journeys to pre-school. The measures outlined in this document will support this role and hopefully reduce the number of journeys taken by car. We have slightly decreased our percentage of children walking to and from pre-school this year (as this is the first year we have incorporated wraparound children in our survey), we hope to increase again next year.

Monitoring and Review

Pippin Pre-School is committed to ensuring this travel plan is adopted and reviewed regularly. The Pippin Committee will discuss the travel plan at their monthly meetings and also discuss during our AGM In October.

The travel plan will be updated annually in the Spring term with the results of the in-depth travel survey which will be carried out during the Autumn term each year. This will capture data from new parents following new intake in September. Following the results of the survey, the sustainable travel policy will be updated as necessary and disseminated to parents, carers and staff via newsletters and the website. Action points on the travel plan will also be reviewed and updated accordingly.